

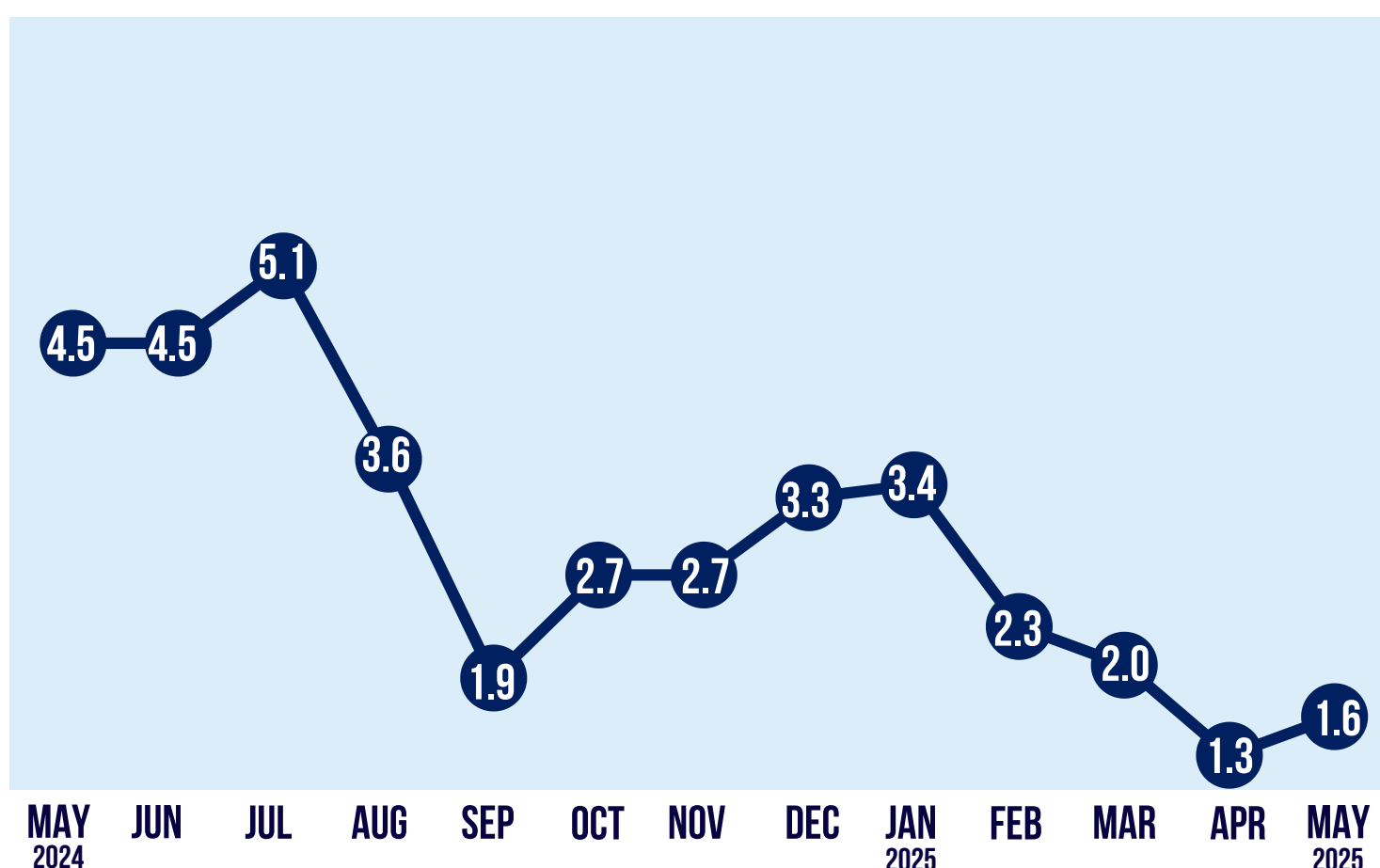
Central Luzon's Inflation Rate

May 2025 (2018=100)

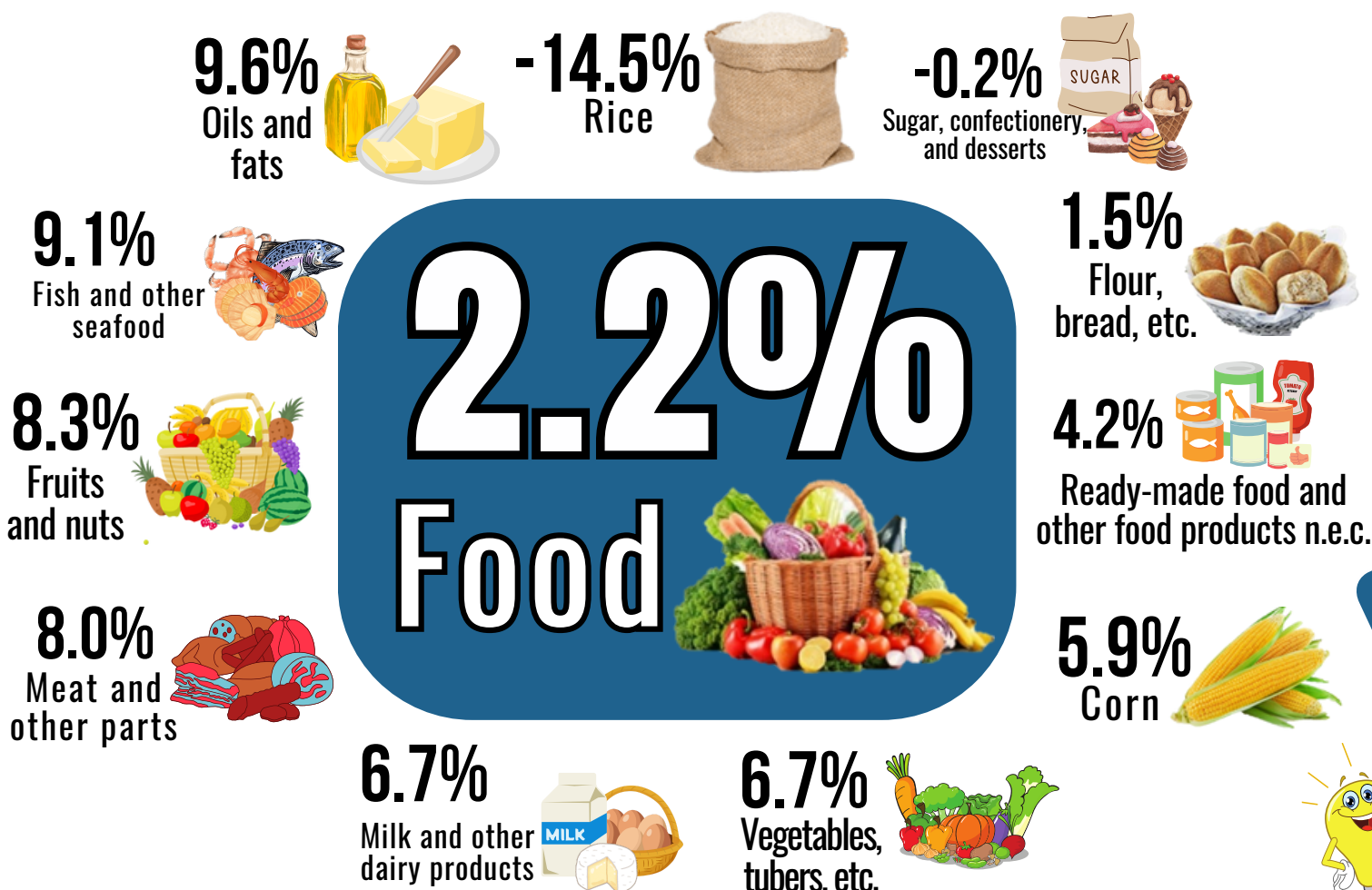
Inflation Rate

↑ 1.6%

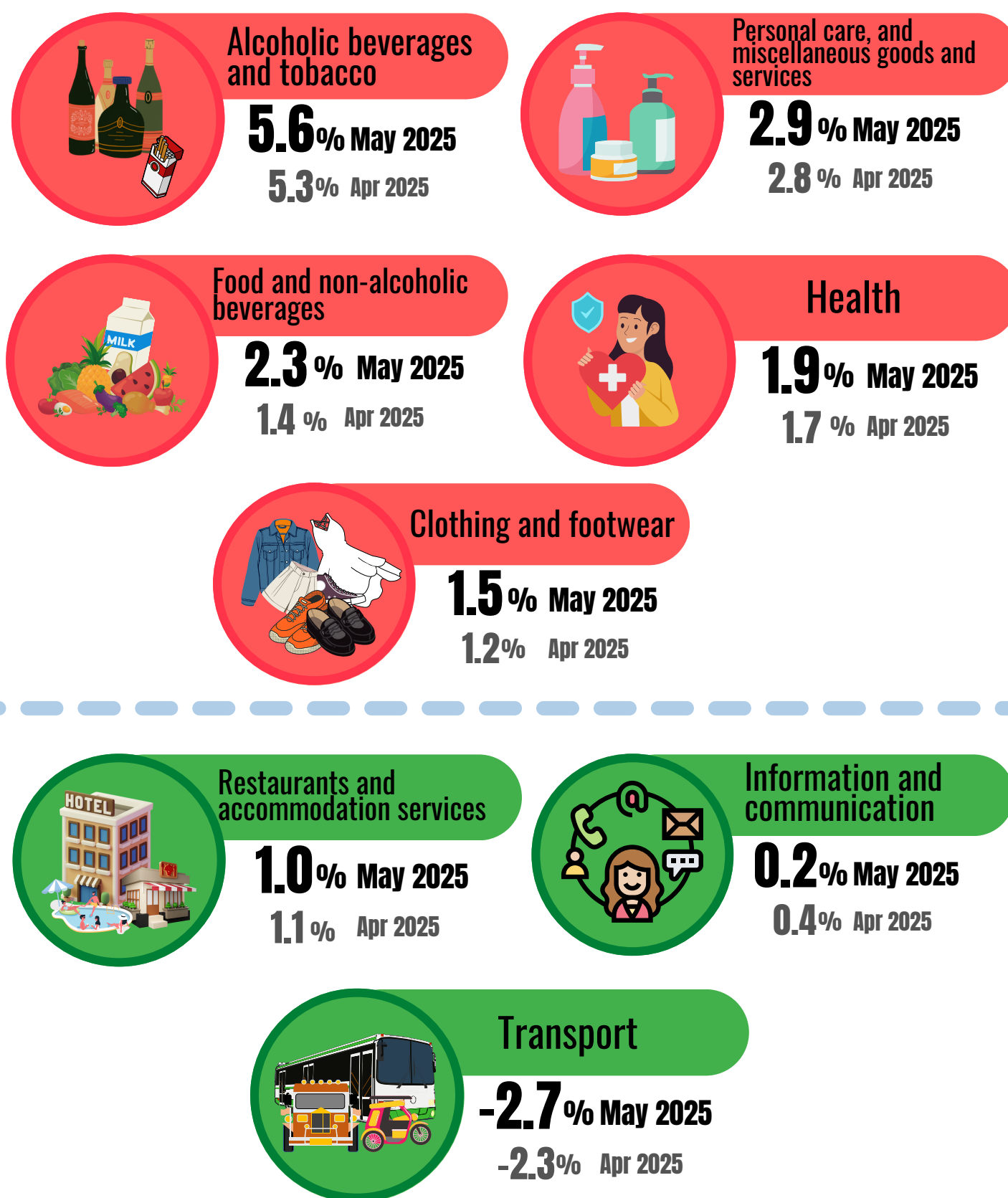
Year-on-Year Inflation Rate (IN PERCENT)



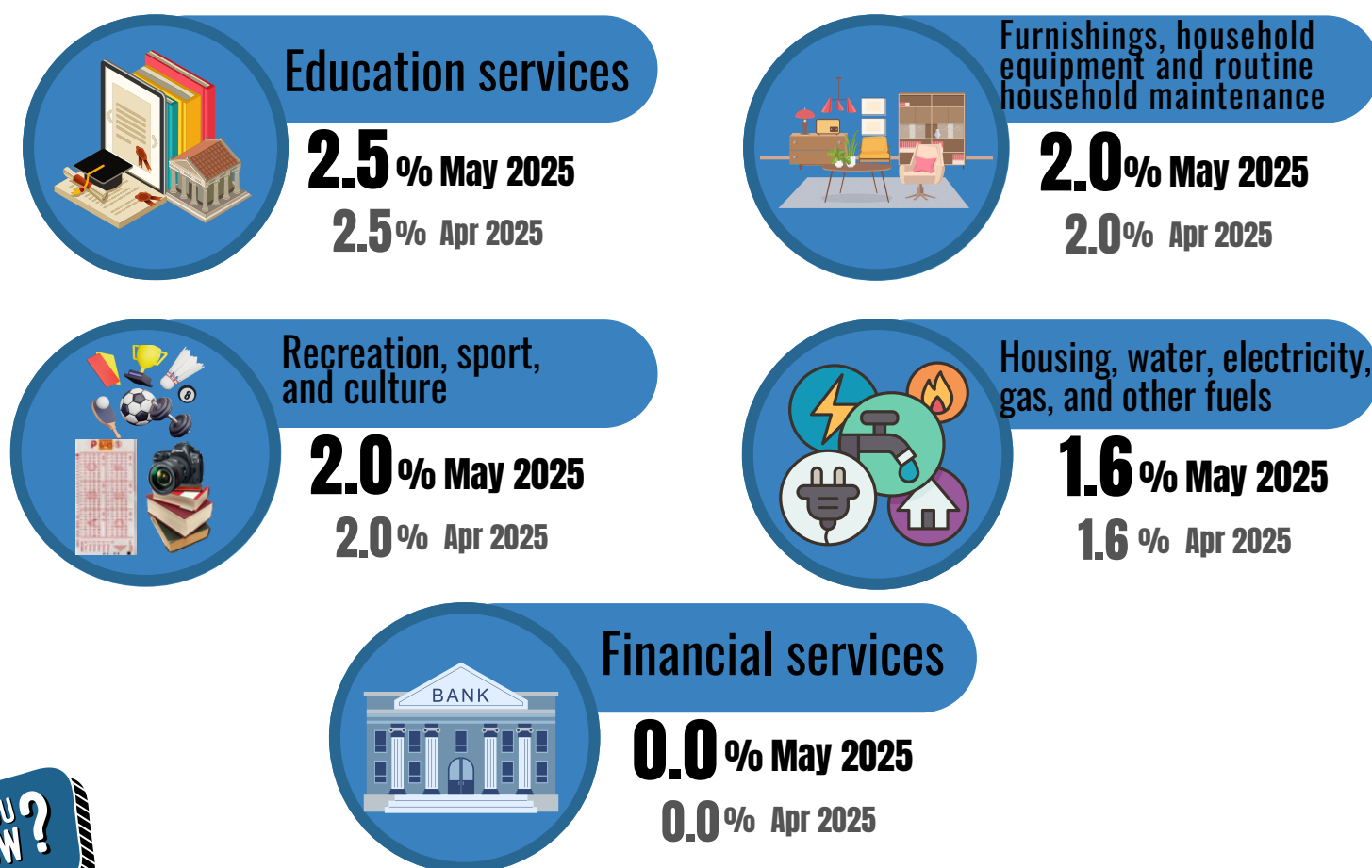
Food Inflation Rate



Major Household Expenditure Groups



No Change
From last month's inflation



DID YOU KNOW?

The overall increase in food inflation for May 2025 was primarily driven by the increase in the index for meat and other parts of slaughtered land animals, which accelerated from 8.0 percent during the month from 7.4 percent in April 2025. Moreover, inflation for fish and other seafood increase to 9.1 percent this month. The inflation for milk and other dairy products increased to 6.7 percent from 5.7 percent in April 2025.

For further information and technical inquiries:

Visit our website: rss03.psa.gov.ph | Email us at: rss03@psa.gov.ph | Call us at: (045) 455 2552

Like us on Facebook: fb.com/PSARegion3

Follow us on X: [@PSA_RSS03](https://twitter.com/PSA_RSS03)